

INSPIRATIONS & MATERIALS
2014 - 2015
INSPIRATIONS & MATERIALS 2014 - 2015

1. **Miroir/Mirror** «# 180» d'/by Halb/halb. 2. **Glace luminescente/Luminescent Ice cream** de/by Charlie Harry Francis de/from Lick Me I'm Delicious. 3. «**Parmesan Pencils**» du/by Kolle Rebbe pour/for the Deli Garage. 4. «**Tea calendar**» de/by Kolle Rebbe pour/for The Hälssen & Lyon. 5. «**Archeology diet**» de/by Studiolav. 6. «**Scrubba**» Sac lavant le linge et transportable/Wash bag. 7. «**Tinctorial Textiles**» de/by Van Eijk & Van der Lubbe.



4



5

7



6





COUTURE BISCUITS
Herringbone Tweed | Chocolate

STUDIOLAV for **HAIZHEN WANG** AW13-14



7



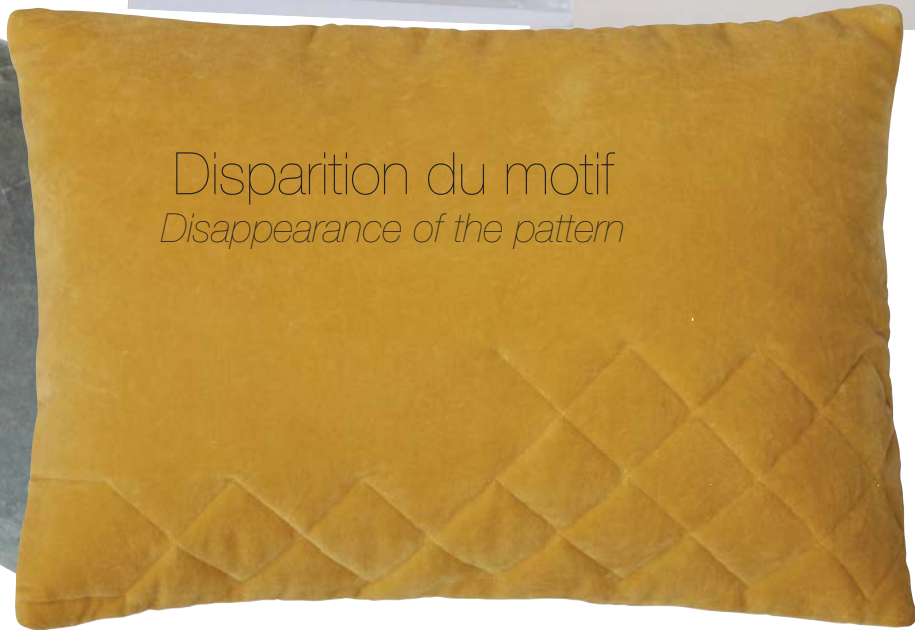
COUTURE BISCUITS
Pied de Poule | Vanilla

STUDIOLAV for **HAIZHEN WANG** AW13-14

6



9



Disparition du motif
Disappearance of the pattern



8

Motif découpé
Cutted pattern



10

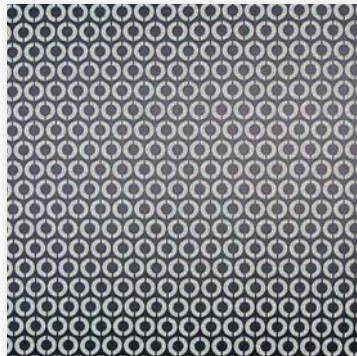


Motifs Op Art

Op Art patterns



6



7



8



9



10